

1 c. SUS SCROFA BÆFICUS.

Thos. Abstract P. Z. S. 1912, p. 14 (March 12).

Upper length of skull of male 324 mm. No woolly underfur present, even in winter.

Range. Southern Spain.

Type locality. Coto Doñana, Huelva.

Type. Old male. B.M. No. 8.3.8.12. Collected 6 February, 1908, and presented by Abel Chapman, Esq.

2. SUS ATTILA.

Thos. Abstract P. Z. S. 1912, p. 13 (March 12).

Upper length of skull of male 452 mm.; height, including lower jaw, 271 mm. Woolly underfur present.

Range. Hungary and S. Russia, probably extending into Siberia.

Type locality. Kolozsvár (= Klausenburg), Transylvania.

Type. Adult male. B.M. No. 12.1.23.1. Collected 8th December, 1911. Presented by Fräulein Sarolta von Wertheimstein.

PAPERS.

21. A Contribution towards the Knowledge of the Spiders and other Arachnids of Switzerland. By the Rev. O. PICKARD-CAMBRIDGE, M.A., F.R.S., C.M.Z.S., etc.

[Received October 13, 1911: Read February 20, 1912.]

(Text-figures 51 & 52.)

The materials for the accompanying List have been kindly got together for me by those whose initials are appended to each species. They have been collected for the most part during tours through Switzerland, and in one or two cases during short sojourns in some of the localities mentioned. It is not pretended that the number of species enumerated represents more than a small proportion* of those recorded by other authors, or likely to be found by careful expert search in Swiss regions, but it shows how very many objects in one special branch of Natural History can be obtained even by observers who may be non-specialists, as was the case with nearly all those whose initials are here appended. Of course it must be taken into consideration that in the collecting of Arachnids there is no necessity for the paraphernalia absolutely required for the collecting and preserving of entomological specimens in general. A few small bottles of methylated

* The present known number of Swiss Spiders, according to Dr. Roger de Lessert, amounts to 616. See *Revue Suisse Zool.* vol. xvii. p. 485, 1909.

spirit of wine, a few glass tubes of different sizes, contained in strong conveniently shaped tin boxes, are really all the materials that are needed for the preservation of Arachnids; while the "eye of faith and the finger of instinct" assisted by an empty glass tube will suffice in the actual field. Not, of course, but that a strong entomological sweeping hoop-net, for the brushing and sweeping of shrubs and herbage, would fill the pocket-bottles all the faster, and probably with some species not obtainable by other methods. The preponderance in the following List of those groups of Spiders which at once and most obviously claim the attention of the tourist as he toils along—viz., the Epeiridæ, Thomisidæ, Lycosidæ, and Salticidæ—shows, it seems to me, how rich a harvest would be reaped by a resident specialist in some of the localities. The number of species here recorded, in these four groups alone, amounts to 102 out of the total of 212 species collected of the Araneidea (or true Spiders); while those of the great group Theridiidæ (in its widest sense) are only 65 in number: a group which, I may remark in passing, numbers in the British Islands alone upwards of 250 out of a total of the whole Order of somewhere about 550! The greater number, however, of the Theridiidæ require something more in the way of wearisome search than even the most observant eye of the ordinary passing tourist; and hence the tourist's bottle is most commonly filled by species of the other four groups mentioned, and which, often in countless numbers, are obvious on all sides on a fine day in the mountains.

I must here acknowledge my indebtedness to Mons. Eugène Simon of Paris, and Dr. Roger de Lessert, of the Natural History Museum, Geneva, for their invaluable assistance in the identification of many of the species in the following List with which I was unacquainted.

LIST OF SWISS ARACHNIDS.

Collected, or sent to me, at various periods and in various localities by the following:—

Initials in List.

- A. W. P.-C. (A. W. Pickard-Cambridge, Balliol College, Oxford.)
 R. J. P.-C. (Rev. R. J. Pickard-Cambridge, Warmwell Rectory, Dorchester.)
 H. A. P. (late Rev. H. A. Pickard, Airedale, Oxford.)
 C. W. (Cecil Warburton, Christ's College, Cambridge.)
 F. P. S. (F. P. Smith, 5 Gibson Square, London.)
 R. G. (Robert Godfrey, late of 46 Cumberland Street, Edinburgh.)
 G. N. (late George Nicholson, Director, Royal Gardens, Kew, and 37 Larkfield Road, Richmond.)
 A. S. A. (late A. S. Atkinson, Nelson, New Zealand.)

Initials in List.

- E. S. (Eugène Simon, 16 Villa Saül, Avenue du bois de Boulogne, Paris.)
 A. E. E. (Rev. A. E. Eaton, Symondsburly, Bridport, Dorset.)
 H. S. (Henry Speyer, Reigate.)
 R. de L. (Dr. Roger de Lessert, Museum of Natural History, Geneva.)
 C. E. M. I. (C. E. M. Ince, per late F. O. Pickard-Cambridge.)
 C. (Dr. Collingwood, the late.)

Class ARACHNIDA.

Order ARANEIDEA.

Fam. DYSDERIDÆ.

- Harpactes drussoides* Sim. Chamounix. R. J. P.-C.
Sejestría senoculata Linn. Simplon. A. S. A.

Fam. DRASSIDÆ.

- Drassus hispidus* L. Koch. Sullen-Tyrol. A. W. P.-C.
 „ *troglodytes* C. L. Koch. Zinal, Engstlen Alp, and Châlet de Melèze, St. Gervais les Bains. A. W. P.-C. Simplon. A. S. A. Zermatt. R. J. P.-C. Switzerland. G. N.
Drassodes lapidosus Walek. Simplon. A. S. A. Switzerland. H. S. Chamounix. R. J. P.-C. St. Gervais les Bains. A. W. P.-C. Montreux. C.
 „ *pubescens* Thor. Arolla. A. W. P.-C.
Prosthesima apricorum L. Koch. Simplon. A. S. A.
 „ *talpina* L. Koch. Bel Alp. G. N.
 „ *petiverii* Scop. Montreux. C.
 „ *nigrita* Fabr. Châlet de Melèze, St. Gervais les Bains. A. W. P.-C.
 „ *latreillii* Sim. St. Gervais les Bains. A. W. P.-C.
 „ *pratfca* L. Koch. "Switzerland." H. S.
Callilepis nocturna Linn. St. Gervais les Bains. A. W. P.-C. Simplon. A. S. A. Switzerland. H. S.
Gnaphosa badia L. Koch. (*G. molesta* Cambr.) St. Gervais les Bains, Arolla, and Sullen-Tyrol. A. W. P.-C.
 „ *petrobia* L. Koch. Switzerland. G. N. and R. J. P.-C.
 „ *tigrina* Sim. Switzerland. R. J. P.-C.
Micaria hospes Kulcz. Simplon. A. S. A.
 „ *breviuscula* Sim. Zermatt. R. J. P.-C.
 „ *scenica* Sim. Bel Alp. G. N. Zermatt. R. J. P.-C. Zinal. A. W. P.-C.
 „ *pulicaria* Sund. St. Gervais les Bains. A. W. P.-C.

- Clubiona hilaris* Sim. Simplon. A. S. A.
Cheiracanthium italicum Can. & Pav. Zermatt. H. S.
Zora maculata Bl. Chamounix. A. W. P.-C. Montreux. C.

Fam. DICTYNIDÆ.

- Dictyna viridissima* Walck. Alps. E. S.
 „ *flavescens* Walck. Alps. E. S.
 „ *uncinata* Westr. Switzerland. H. S.
Amaurobius fenestralis Stroem. Simplon. A. S. A. Zinal.
 A. W. P.-C. Montreux. C.
 „ *ferox* Walck. Montreux. C.
 „ *4-guttatus* Hahn. Alps. E. S.

Fam. AGELENIDÆ.

- Cryphaca silvicola* C. L. Koch. Zinal. A. W. P.-C.
Celotes terrestris Wid. Switzerland. R. G. and A. W. P. C.
 Interlaken. A. E. E.
 „ *pickardii* Cambr. Switzerland. H. A. P.
 „ *atropos* Walck. Chamounix. A. W. P.-C. Switzerland.
 H. S.
 „ *claustrarius* Hahn. Switzerland. R. G., A. E. E.,
 R. J. P.-C., and G. N.
Tegenaria campestris C. L. Koch. Alps. E. S.
 „ *tridentina* L. Koch. Simplon. A. S. A.
 „ *derhamii* Scop. Montreux. C.
 „ *pusilla* Sim. Chamounix. A. W. P.-C.
 „ *domestica* Clk. Montreux. C.
Cicurina cinerea Panz. Switzerland. R. G.
Textrix denticulata Oliv. Simplon. A. S. A. Bel Alp. G. N.
 Montreux. C.
Agelena labyrinthica Clk. Simplon. A. S. A. Switzerland. H. S.,
 R. J. P.-C., and H. A. P. Montreux. C.

Fam. ZODARIIDÆ.

- Zodarion gallicum* Sim. Alps. E. S.

Fam. PHOLCIDÆ.

- Pholcus phalangoides* Fuess. Montreux. C.

Fam. THERIDIIDÆ.

- Episinus truncatus* Walck. Montreux. C.
Theridion riparium Bl. Switzerland. R. G.
 „ *bigibbum*, sp. n. (text-fig. 51). Alps. E. S. (For
 description see appendix, p. 403.)

- Theridion sisyphium* Clk. Simplon. A. S. A. Zinal and Engstlen
Alp. A. W. P.-C. Switzerland. H. S.
and H. A. P. Montreux. C.
- „ *nigro-variegatum* Sim. Geneva. R. de L.
- „ *nigro-punctatum* Luc. Alps. E. S.
- „ *blackwallii* Cambr. Alps. E. S.
- Phyllonethis lineatu* Clk. Switzerland. H. A. P.
- Diplocephala braccata* C. L. Koch. Alps. E. S.
- Steatoda bipunctata* Linn. Simplon. A. S. A.
- Lithyphantes corollatus* Linn. Alps. E. S.
- „ *paykullianus* Clk. Alps. E. S.
- Teutana grossa* C. L. Koch. Alps. E. S.
- Euryopis flavomaculata* C. L. Koch. Alps. E. S.
- Asagena phalerata* Panz. Alps. E. S. Switzerland. G. N.
Chamounix. A. W. P.-C.
- Enoplognatha thoracica* Wid. Alps. E. S.
- Robertus lividus* Bl. Simplon. A. S. A. Arolla. A. W. P.-C.
- Tapinopa longidens* Wid. Alps. E. S.
- Bolyphantes alticeps* Sund. St. Gervais les Bains. A. W. P.-C.
- Drapetisca socialis* Sund. Switzerland. C. E. M. I.
- Linyphia marginata* C. L. Koch. Switzerland. G. N.
- „ *triangularis* Clk. Alps. E. S. Montreux. C.
- „ *phrygiana* C. L. Koch. Alps. E. S.
- „ *montana* Clk. Simplon. A. S. A. Switzerland. H. A. P.
- „ *pusilla* Sund. St. Gervais les Bains. A. W. P.-C.
- „ *frutetorum* C. L. Koch. Alps. E. S.
- „ *emphana* Walck. Alps. E. S.
- „ *hortensis* Sund. Alps. E. S.
- Leptyphantes tenuis* Bl. St. Gervais les Bains. A. W. P.-C.
- „ *fragilis* Thos. Zinal. A. W. P.-C.
- „ *expuncta* Cambr. Zinal. A. W. P.-C.
- „ *tenebricola* Wid. Switzerland. G. N. Alps. E. S.
Sulden-Tyrol. A. W. P.-C.
- „ *pulcher* Kulez. Simplon. A. S. A. Sulden-Tyrol.
A. W. P.-C.
- „ *mengii* Kulez. Arolla. A. W. P.-C.
- „ *minutus* Bl. Chrissons. R. J. P.-C.
- „ *leprosus* Ohl. Montreux. C.
- Bathyphantes concolor* Wid. Gorge of Massa. G. N. Chamounix.
R. J. P.-C.
- „ *variegatus* Bl. Switzerland. G. N.
- Hilaira montigena* L. Koch. Eggishorn. G. N.
- Tigellinus sarcicola* Camb. Geneva. R. de L.
- Triconchus mabi* Dahl-Bös. Chamounix. A. W. P.-C.
- Centromerus subalpinus* Lessert. Geneva. R. de L.
- „ *affinis* Wid. (= *C. pabulator* Cambr.-Less.). Engstlen
Alp. or St. Gervais les Bains. A. W. P.-C.
- Micryphantes gulosa* L. Koch. Eggishorn. A. W. P.-C.
- Oreoneta fortunata* Cambr. St. Gervais les Bains. A. W. P.-C.

- Microneta rurestris* C. L. Koch. Eggishorn and St. Gervais les Bains. A. W. P.-C.
 „ *viaria* Bl. Arolla. A. W. P.-C.
Gongylidium apicatum Bl. Bel Alp. G. N.
Erigone tirolensis L. Koch. Switzerland. G. N. Bel Alp. G. N.
 „ *remota* L. Koch. Bel Alp. G. N.
 „ *atra* Bl. Alps. E. S.
 „ *jugorum* L. Koch.
 „ *dentipalpis* Wid. St. Gervais les Bains. A. W. P.-C.
Diplocephalus cristatus Bl. St. Gervais les Bains. A. W. P.-C. Chamounix. R. J. P.-C.
 „ *castaneipes* Sim.-Lessert. Geneva. R. de L.
 „ *kochii* Lebert-Lessert. Geneva. R. de L.
 „ *eborodunensis* Cambr. Engstlen Alp. A. W. P.-C.
Lophocarenum nemorale Bl. Geneva. R. de L. (Sent to me as *L. stramineum* Menge.)
Nematognus sanguinolentus Walck. Alps. E. S.
Araoncus altissimus Sim. Bel Alp. G. N.
Styloctetor (sub *Hilaira*) *carli* Lessert (sent to me for examination by Lessert). Geneva. R. de L. (Appears to me to be rather a *Styloctetor* than a *Hilaira*.)
 „ *broccha* L. Koch. Geneva. R. de L.
Tapinocyba affinis Lessert. Geneva. R. de L.
 „ *pallens* Cambr. Geneva. R. de L.
Ceratinella brevis Wid. St. Gervais les Bains. A. W. P.-C.

Fam. ULBORIDÆ.

- Hypptiotes paradoxus* C. L. Koch. Simplon. A. S. A.

Fam. EPEIRIDÆ.

Subfam. TETRAGNATHINÆ.

- Tetragnatha extensa* Linn. Switzerland. H. S. Montreux. C.
Pachygnatha degeerii Sund. Switzerland. C. E. M. I.
Meta merianæ Scop. Simplon. A. S. A. Switzerland. G. N. Montreux. C.
 „ *menardi* Latr. Montreux. C.
 „ *segmentata* Clk. Simplon. A. S. A. St. Gervais les Bains. A. W. P.-C. Switzerland. R. G. Montreux. C.

Subfam. ARGIOPINÆ.

- Cyclosa conica* Pall. Simplon. A. S. A.

Subfam. EPEIRINÆ.

- Zilla montana* C. L. Koch. Switzerland. G. N. Simplon. A. S. A. Alps. E. S.
 „ *x-notata* Clk. Montreux. C.

- Zilla stroemii* Thor. Switzerland. G. N.
Cercidia prominens Westr. Alps. E. S.
Singa albovittata Westr. Switzerland. G. N.
 „ *hamata* Clk. Alps. E. S.
Epeira nordmannii Thor. Zinal. A. W. P.-C.
 „ *carbonaria* L. Koch. Switzerland. G. N.
 „ *alpica* L. Koch. Switzerland. G. N.
 „ *circe* Sav. Simplon. A. S. A.
 „ *cucurbitina* Clk. Simplon. A. S. A. Switzerland. H. A. P.
 Montreux. C.
 „ *diademata* Clk. Switzerland. H. S., R. G., R. J. P.-C.,
 G. N., and H. A. P. Simplon. A. S. A.
 Montreux. C.
 „ *ceropegia* Walck. Simplon. A. S. A. Switzerland. G. N.
 St. Gervais les Bains. A. W. P.-C.
 Halkern Thal. A. E. E. Zermatt.
 R. J. P.-C.
 „ *pyramidata* Clk. Halkern Thal. A. E. E. Switzerland.
 H. A. P.
 „ *marmorea* Clk. St. Gervais les Bains. A. W. P.-C.
 Switzerland. H. A. P.
 „ *sclopetaria* Clk. Montreux. C.
 „ *quadrata* Clk. St. Gervais les Bains. A. W. P.-C.
 „ *dioides* Walck. Montreux. C.
 „ *adianta* Walck. Alps. E. S.
 „ *triguttata* Fabr. Geneva. R. de L.
 „ *sturmii* Hahn (*agalea* Bl.). Geneva. R. de L.
 „ *redii* Scop. Montreux. C.
 „ *montana* C. L. Koch. Alps. E. S.

FAM. THOMISIDÆ.

- Thomisus onustus* Walck. Montreux. C.
Misumena vatia Clk. Simplon. A. S. A.
Dicea dorsata Fabr. Montreux. C.
Nysticus cristatus Clk. Switzerland. R. G. Simplon. A. S. A.
 St. Gervais les Bains. A. W. P.-C.
 Montreux. C.
 „ *lanio* C. L. Koch. Switzerland. R. G.
 „ *gallicus* Sim. St. Gervais les Bains, Arolla, and
 Eggishorn. A. W. P.-C.
 „ *kochii* Thor. Switzerland. R. J. P.-C.
 „ *pini* C. L. Koch. Simplon. A. S. A. Montreux. C.
 „ *lateralis* Hahn. Switzerland. R. G.
 „ *glacialis* L. Koch. Gorge of Massa and Bel Alp. G. N.
 „ *luctator* L. Koch. Simplon. A. S. A.
 „ *bifasciatus* C. L. Koch. Switzerland. R. J. P.-C.
 „ *erraticus* Bl. Arolla. A. W. P.-C.

- Philodromus alpestris* C. L. Koch. Simplon. A. S. A. Zermatt.
R. J. P.-C. Arolla and St. Gervais
les Bains. A. W. P.-C. Switzer-
land. G. N.
- „ *lividus* Simon. Switzerland. G. N.
- „ *larvicium* Simon. Switzerland. G. N.
- „ *collinus* C. L. Koch. Switzerland. C. W.
- „ *margaritatus* Clk. Simplon. A. S. A. Switzerland.
G. N. Var.: *jejunus* Panz. Switzer-
land. C. E. M. I.
- „ *emarginatus* Schr. Simplon. A. S. A.
- Thanatus arenarius* Thor. Eggishorn. A. W. P.-C.
- „ *formicinus* Clk. Simplon. A. S. A. Montreux. C.
Eggishorn and Sullen-Tyrol.
A. W. P.-C. Switzerland. G. N.

Fam. SPARASSIDÆ

- Micrommata virescens* Clk. Switzerland. R. G. Simplon. A. S. A.
Montreux. C.

Fam. PISAURIDÆ.

- Pisaura mirabilis* Clk. Switzerland. R. J. P.-C. and H. A. P.
Montreux. C.

Fam. LYCOSIDÆ.

- Dolomedes fimbriatus* Walck. Halkern Thal. A. E. E.
- Trochosa terricola* Thor. Chamounix. R. J. P.-C. Switzerland.
H. A. P.
- „ *leopardus* Sund. St. Gervais les Bains. A. W. P.-C.
Switzerland. H. A. P.
- Pirata latitans* Bl. St. Gervais les Bains. A. W. P.-C. Montreux. C.
- Tarentula andrenivora* Walck. Arolla. A. W. P.-C. Switzerland.
G. N. Montreux. C.
- „ *lessertii*, sp. n. (text-fig. 52). Switzerland. H. S. (For
description see appendix, p. 404.)
- „ *pulverulenta* Clk. Arolla and St. Gervais les Bains.
A. W. P.-C. Simplon. A. S. A.
Zermatt. R. J. P.-C. Switzerland.
G. N. and H. A. P.
- „ *trabalis* Clk. Simplon. A. S. A. Switzerland. G. N.
Zermatt. R. J. P.-C.
- „ *miniata* C. L. Koch. Montreux. C.
- „ *uemoralis* Westr. Gorge of Massa and Bel Alp. G. N.
St. Gervais les Bains. A. W. P.-C.
Simplon. A. S. A.
- „ *barbipes* Sund. Gorge of Massa. G. N.

- Tarentula aculeata* Clk.-Lessert (= *T. accentuata* auctt., Lessert).
Zermatt and Schiedeger. R. J. P.-C. Arolla.
A. W. P.-C.
- Lycosa amentata* Clk. Switzerland. R. J. P.-C., G. N., and H. A. P.
Simplon. A. S. A. Engstlen Alp and
St. Gervais les Bains. A. W. P.-C.
- „ *paludicola* Clk. Switzerland. C. W.
- „ *accentuata* Walek.-Sim. Switzerland. F. P. S.
- „ *pulverulenta* Clk.-Sim. Switzerland. F. P. S. St. Gervais
les Bains. A. W. P.-C.
- „ *nigra* C. L. Koch. Zermatt and Zinal. A. W. P.-C. Switz-
erland. G. N. and R. G. Zermatt.
R. J. P.-C.
- „ *blandu* C. L. Koch (& *cursoria*, auctt.). Sulden-Tyrol,
St. Gervais les Bains, Zinal, Cha-
mounix, and Arolla. A. W. P.-C.
Switzerland, Gorge of Massa, and
Bel Alp. G. N. Simplon. A. S. A.
Chamounix and Zermatt. R. J. P.-C.
- „ *giebeli* Pav. Switzerland and Zermatt. R. J. P.-C. Zinal.
A. W. P.-C. Switzerland, Bel Alp. G. N.
- „ *riparia* C. L. Koch. Switzerland. G. N. Zermatt.
R. J. P.-C. St. Gervais les Bains
and Switzerland. A. W. P.-C.
- „ *ferruginea* L. Koch. Zermatt and Sulden-Tyrol. A. W. P.-C.
- „ *bifasciata* C. L. Koch. Montreux. C.
- „ *pedestris* Sim. Switzerland. R. J. P.-C.
- „ *monticola* C. L. Koch. Aletsch Glacier, Zinal, and Switzer-
land. A. W. P.-C. Bel Alp and
Switzerland. G. N. Eggishorn.
A. W. P.-C.
- „ *lugubris* Walek. Rhone Glacier. R. J. P.-C. Switzerland.
G. N.
- „ *torrentum* Sim. Bel Alp and Switzerland. G. N.
- „ *wayleri* Hahn. Switzerland, Rhone Glacier, and Zermatt.
R. J. P.-C.
- „ *palustris* Linn. Switzerland and St. Gervais les Bains.
A. W. P.-C.
- „ *ludovica* Dahl. Simplon. A. S. A. Engstlen Alp. A. W.
P.-C.
- „ *mixta* Kulez. Simplon. A. S. A. Gorge of Massa. G. N.
- „ *tarsalis* Thor. Simplon. A. S. A. St. Gervais les Bains
and Chamounix. A. W. P.-C.
- „ *albata* L. Koch. Bel Alp. G. N. Switzerland. R. J. P.-C.
St. Gervais les Bains. A. W. P.-C.
- „ *agrestis* Westr. Switzerland. H. S.
- Anlonia albinana* Walek. Montreux. C.

Fam. SALTICIDÆ.

- Epiblemum scenicum* Clk. Simplon. A. S. A. Bel Alp. G. N. Arolla and St. Gervais les Bains. A. W. P.-C. Montreux. C.
- Heliophanus metallicus* Sim. Arolla and Eggishorn. A. W. P.-C.
- „ *ceneus* Hahn. Switzerland. G. N. Simplon. A. S. A. Montreux. C. Arolla. A. W. P.-C. Zermatt. R. J. P.-C.
- Euophrys petrensis* C. L. Koch. Arolla and Eggishorn. A. W. P.-C. Switzerland. G. N.
- „ *pictilis* Sim. St. Gervais les Bains. A. W. P.-C.
- „ *frontalis* Walck. Chamounix. A. W. P.-C.
- „ *erratica* Walck. Switzerland. R. G.
- Sitticus longipes* Can. Simplon. A. S. A.
- Attulus histrio* Sim. Simplon. A. S. A.
- Attus rupicola* C. L. Koch. Rhone Glacier and Switzerland. R. J. P.-C. and H. A. P.
- „ *pubescens* C. L. Koch. Switzerland. G. N.
- Dendryphantès encarpatus* Walck. Montreux. C.
- Philæus chrysops* Poda. Simplon. A. S. A.
- Ælurops v-insignitus* Clk. Eggishorn and Arolla. A. W. P.-C. Simplon. A. S. A.
- Pellenes lapponicus* Sund. Chamounix. R. J. P.-C.
- Synageles venator* Luc. Chamounix. A. W. P.-C.

Order PHALANGIDEA.

- Homalenotus quadridentatus* Cuv. Switzerland. C. W.
- Phalangium opilio* Linn. Switzerland. R. J. P.-C. Simplon. A. S. A. Switzerland. H. A. P.
- „ *parietinum* De Geer. Switzerland. H. A. P.
- „ *brevicorne* C. L. Koch. Zermatt. R. J. P.-C.
- Liobunum limbatum* L. Koch. Switzerland.
- „ *rotundum* Latr. Switzerland. R. J. P.-C.
- Platybunus pinetorum* C. L. Koch. Chamounix. R. J. P.-C.
- „ *triangularis* Herbst. Chamounix. A. W. P.-C.
- Oligolophus morio* Fabr.
- Var. *palliata* C. L. Koch. Eggishorn and St. Gervais les Bains. A. W. P.-C.
- Var. *glacialis* C. L. Koch. Bel Alp and Zermatt. R. J. P.-C.
- Var. *alpinus* Herbst. Simplon. A. S. A. Zinal, Arolla, St. Gervais les Bains, Chamounix, and Sulden-Tyrol. A. W. P.-C. Chamounix. R. J. P.-C. Bel Alp. G. N.
- Normal form. St. Gervais les Bains. A. W. P.-C. Switzerland. R. J. P.-C. and G. N.
- Megabunus rhinoceros* Can. Simplon. A. S. A. Switzerland. G. N.

Nemastoma dentipalpe Auss. Chamounix. A. W. P.-C.
 ,, *quadripunctatum* Perty. Interlaken. R. G.

Order **CHERNETIDEA.**

(Pseudo-scorpiones.)

Obisium jugorum L. Koch. Zermatt. R. J. P.-C.
Chthonius tetrachelatus Preysl. Interlaken. R. G.

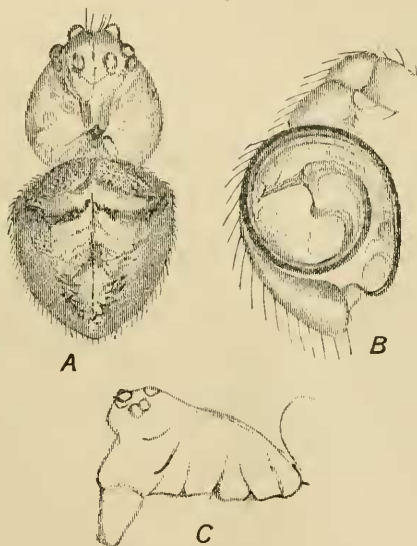
Order **ACARIDEA.**

Cæculus echinipes L. Dufour. Zermatt. R. J. P.-C.

APPENDIX.

Description of *Theridion bigibbum*, sp. n. (Text-fig. 51.)*Adult male.* Length $\frac{1}{11}$ of an inch or 1·7 mm.The *cephalothorax* is broad, rounded behind. Caput prominent.

Text-fig. 51.

*Theridion bigibbum.*

- A. Cephalothorax and abdomen from above and behind.
 (Nat. length $\frac{1}{11}$ of an inch or 1·7 mm.)
 B. Left palpus (outer side).
 C. Cephalothorax (in profile).

Clypeus high. Colour dull yellow, a wedge-shaped dark blackish central band runs from, and includes, the ocular area to the

central impressions. The sides of the thorax are slightly margined also with blackish.

The *eyes* are rather large, and occupy the whole of the fore part of the caput. The four centrals form a large quadrangle rather longer than broad and a little narrower behind. The convexity of the curve of the hinder row is slightly directed backwards, and the interval between the hind-central pair of eyes is rather greater than that between each and the lateral eye next to it.

The *legs* (1, 4, 2, 3) are moderate in length and strength, of a pale yellowish-white hue, with a slight appearance of a dark but defective annulation at the extremities of the joints. They are furnished with hairs and a few slender bristles only.

The *palpi* are short, similar to the legs in colour. The digital joint very large, of an oval form; and the palpal organs, directed outwards, are simple in form but completely encircled on the margin by a long coiled black spine issuing from near the hinder margin, from and in connection with a largish corneous process, and ending in a fine somewhat sinuous slender point underneath the fore extremity of the joint.

Falces rather small and weak, and directed slightly forwards.

Maxille, labium, and sternum normal, and, with the falces, similar in colour to the cephalothorax.

The *abdomen* is large and of a general cretaceous white colour. Its form (looked at from above) is somewhat subtriangular, and at the shoulders (or each anterior fore corner) is a slight prominent point or gibbosity. An obscure pattern of a dusky hue may be traced on the hinder extremity, and the fore extremity is also similarly suffused.

Two examples, both males, one adult the other immature, were contained among other Swiss spiders kindly given to me some years ago by Mons. Eugène Simon. It is most probable that a series of specimens would show a richer colouring, and a more definite pattern than could be traced in these two examples, which had apparently not yet attained their full development in these respects. In general appearance the present species shows some resemblance to *Theridion pallens* Bl., but the decided difference of the thoracic markings, as well as the form of the abdomen, and the details of the palpal organs, will serve to distinguish them without difficulty.

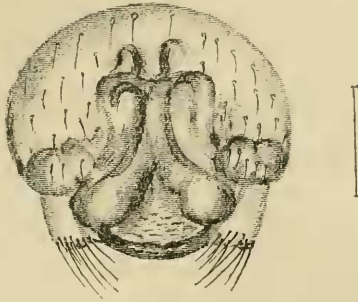
Description of *Tarentula lessertii*, sp. n. (Text-fig. 52.)

Adult female. Length $6\frac{1}{2}$ lines.

Of normal general form. The *cephalothorax* is of a dark brown colour, with a broad central longitudinal straight band of a paler hue, without lateral constriction, and clothed densely with short hoary hairs; the normal lateral converging indentations are marked by rather darker lines or narrow stripes.

The *eye-area* is dark blackish at the sides and in front; the quadrangle of the four posterior eyes is rather broader than long, and its anterior side is shortest; the two anterior eyes are separated by less than a diameter's interval, and the anterior curved row of four eyes (of which the two centrals are much the largest) are separated by about equal intervals.

Text-fig. 52.

*Tarantula lessertii*.

"Epigyne," ♀.

The *legs* are of moderate length and strength (4. 1. 2. 3), their colour is a uniform yellow-brown without any annuli; the normal spines are rather slender. The *palpi* are similar in colour to the legs. *Falces* normal and of a deep blackish-brown hue; *sternum* dark brown. *Abdomen* dark yellow-brown, its fore-side above abundantly clothed with grey hairs, with the characteristic central longitudinal marking on the fore part of the upper side clothed with hoary hairs, margined with a black line, and followed towards the spinners with a series of indistinct angular lines, or chevrons. The under side of the abdomen is of a uniform paler yellowish-brown colour than the upper side, and clothed with short hoary hairs. The abdominal markings, however, were much obscured by the rather shrunken condition of the abdomen. The epigyne is of a very distinct and characteristic form (see text-fig. 52).

The example above described has been examined by Dr. Roger de Lessert, and its species is unknown to him. I have not been able to identify it with any known continental species, and am therefore induced to describe it as new to science. It was taken during a tour in Switzerland and kindly sent to me by Mr. Henry Speyer of Reigate.